

# Electives

---

Most of what you want to know



# Christian Studies

Senior Course Options

Critical Thinking and Christian  
Worldview

Cults and New Religious  
Movements

Ethics and Justice

Faith in Film and Fiction

Introduction to World Religions

Resilient Faith



# Critical Thinking with a Christian Worldview

---

- During a normal class we will discuss, analyze, and evaluate great debatable topics of the past and today (many chosen from the news), paying particular attention to discovering the biases that impede our thinking. Activities will include Socratic Seminars, journaling, and reading of relevant texts. Students may also participate in debates or mock interviews, where they will have to think “on their feet.”
- Students will have some daily reading, but it will never amount to more than a few pages a day. Several key ideas will be committed to memory early on, but all is entirely manageable.
- Quizzes, tests, seminar discussions, short argument analyses, and, eventually, the ability of students to lead seminars on their own. Students will be assessed on their understanding and use of critical thinking principles (not on their ability to memorize). So, some mental energy will be vital to successfully navigating the course.

# Ethics and Justice

---

- Class time will consist of developing a working knowledge of the various systems of thinking to achieve justice and the development of the significance of human rights. Students will then work towards and applying those ideas to ethical case studies including gender issues, war, terrorism, racism, termination of life (abortion/capital punishment/assisted suicide), environmental causes, and more through a Socratic Seminar approach.
- Outside reading and media viewing will be assigned intermittently.
- Grades are determined through reading quizzes, class participation, discussion involvement, and written work.



# Faith in Film and Fiction

---

- This class consists of discussion on the key elements of filmmaking, supported by media presentation, and the teaching of the technique and way we might better understand mainstream movies if viewed through a spiritual lens. Class will serve as a 'laboratory' of sort, giving opportunity to view, deconstruct, and apply skills of analysis of film technique and faith application.
- Outside of class, students are given movie viewing assignments requiring weekly written movie reviews.
- Grades determined through viewing quizzes, some reading quizzes and a final project for the semester exam.

# Introduction to World Religions

---

- Students will examine beliefs and practices of various Eastern and Western religious traditions, focusing primarily on Islam, Judaism, Hinduism and Buddhism. Students will compare and contrast these varied beliefs through readings, discussions, media presentations and outside field trips.
- Outside classwork will consist mainly of periodic reading and viewing of media presentations.
- Grades are determined through reading quizzes, some in-class writing, and a quarter test. Semester Exam is project based.



# Resilient Faith

---

- What do you do during a normal class?
  - Most classes are discussion oriented, whether in small groups or as whole class.
  - There are some classes with notes or group reading to set up discussions
- How much outside of class work will there be?
  - Students will be responsible for some outside of class reading (roughly two chapters per week)
- How are grades determined? Mostly tests/quizzes? Homework?
  - The primary grade is discussion/participation. There will be 3-4 quizzes throughout the semester. There is one “test,” which is a final one-on-one interview with the teacher.



# Computer and Technology

---

AP Computer Science

A/V Production

A/V Sports Production

Making Electronics

Programming Video  
games



# AP Computer Science

---

- What do you do during a normal class?
  - Projects, readings, and discussions about topics like data security, logic, binary, image processing, data analysis, and technological innovations
- How much outside of class work will there be?
  - Limited work outside of class with the exception of the major projects
- How are grades determined?
  - The 8 major projects (2 per quarter) in the course make up the bulk of your grade



# A/V Production

---

- What do you do during a normal class?
  - Do you like storytelling or camera work? Are you a natural public speaker or enjoy film and production? Then A/V Production might be the class for you! In this class you're either learning about a new piece of equipment or software or you're in pre-production, production, or post-production on your latest video or audio recording. You choose your topics. Let them be your passions!
- How much outside of class work will there be?
  - The amount of outside work depends on what kind of projects and roles you want to take on but there will definitely be work outside of class for filming.
- How are grades determined?
  - Grades are determined by a combination of quality and effort on the projects you create.



# A/V Sports Production

---

- What do you do during a normal class?
  - Watch out Sports Center because CHCA has a new course in town! In this version of A/V Sports Production you learn many of the same skills as the regular A/V Production class but your projects center around filming and producing sports highlight videos. Perhaps you're a future journalist or sideline videographer. Let your talents shine here! Make hype videos for your favorite CHCA team and let the crowd cheer!
- How much outside of class work will there be?
  - Depending on the projects and roles you take on, your work could be primarily in class or primarily outside of class.
- How are grades determined?
  - Grades are determined by a combination of quality and effort on the projects you create.



# Making Electronics

---

- What do you do during a normal class?
  - **No Experience Necessary!** If you've ever wanted to know how your electronic devices work, this is the class for you. You will learn to design, wire, and program electronic devices. You will work with motors, lights, sensors, and more to create things like mini-robots, basic electronic games, and rainbow light shows.
- How much outside of class work will there be?
  - The class is designed so that you can do everything during class time. (**No homework.**)
- How are grades determined? Mostly tests/quizzes? Homework?
  - Your grade is based largely on your effort and progress in circuitry and programming. Your final project will be creating a functional electronic device of your own design.



# Programming Video Games

---

- What do you do during a normal class?
  - Do you have a great idea for a video game? We want to help you make it a reality. You will create several games during the semester. Working in GameMaker Studio 2, sometimes together and sometimes on your own.
- How much outside of class work will there be?
  - The course is designed so you don't have to do any work outside of class...but you might want to.
- How are grades determined?
  - There are no quizzes or tests. Your grade is based primarily on projects, with an emphasis on effort and progress.



# General Electives

---

Beyond the Classroom

Business Entrepreneurship

Creative Writing

Cult and New Religious  
Movements

Introduction to Psychology

Perspectives on Entrepreneurship  
and Sustainability

Race, Justice, and Community

Yearbook



# Beyond the Classroom

---

## **What do you do during a normal class?**

Through guest experts, lively class discussion and hands-on learning, we'll discover practical techniques and gain key knowledge to many of life's challenges and mysteries including, but not limited to:

- Finding an apartment, understanding a lease and working productively with your landlord
- Choosing a doctor and managing your medical life (once you turn 18, your parents are no longer in charge.)
- Living on a budget, still having a social life and not starving
- Dealing with common roommate issues, finding the fun on campus, building good working relationships with college faculty, understanding the millions of dollars worth of resources your college has to offer you.

## **How much outside of class work will there be?**

- There will be some practical and fun projects and a little bit of reading

## **How are grades determined? Mostly tests/quizzes? Homework?**

- Active participation and a good attitude are the keys to success in this class



# Business Entrepreneurship

---

- What do you do during a normal class?

Business Entrepreneurship is the name for all the student-run businesses at the school—interning at the coffee bar, print shop, school garden, or other ventures. Students will be placed in a particular business prior to the start of the school year. Students will report daily to their business and work during a pre-determined bell.

- How much outside of class work will there be?

Most of the businesses will require attendance at 2-3 special activities per year (including events like Meet the Teacher Night, Open house, special events, etc.) as well as regularly scheduled meetings often occurring during block days.

- How are grades determined? Mostly tests/quizzes? Homework?

Grades are based on quality of work, participation, knowledge pertinent to the business itself (tested through secret shoppers and pop quizzes), and group projects.



# Creative Writing

---

- What do you do during a normal class?
  - In a normal day in creative writing, you will start the bell off with a 5-10 minutes of journaling to a prompt provided. Each day is different—but you will receive assignments, discuss your writing with other classmates and watch movies/clips to go along with what we are working on.
- How much outside of class work will there be?
  - There should be very minimal work that you need to complete outside of class. There is plenty of time provided throughout the week in class to get assignments done so that you don't have to take anything home!
- How are grades determined? Mostly tests/quizzes? Homework?
  - As far as grades go, there are no quizzes or tests! Your grades are made up on major projects, your writing journal and participation.



# Cults and New Religious Movements

---

- The Cults and NRM class will utilize video analysis of 'cult' groups, discussion of key ideas of charismatic leadership of cult leaders, and Socratic Seminar to better understand spreading of beliefs, communal behavior, and apocalyptic ideas.
- A small portion of the class will involve outside reading and online viewing of relevant matter pertaining to the history and spread of certain Cults or NRM's.
- Grades will be determined through a combination of reading and viewing quizzes, in class writing, and class participation. Final exam is project based.



# Introduction to Psychology

---

- This course is a combination of lecture, in-class demonstrations of psychological concepts, and class discussion based on those key concepts. Focus is placed on understanding Psychology in the world around us, and how we can see those ideas in our culture.
- Outside work is mainly textbook reading of modules within key chapters.
- Grades are determined through a combination of weekly quizzes, periodic in-class writing. There is no semester exam, but rather a 5 page paper covering a psychological subject of the students choosing.



# Perspectives on Entrepreneurship and Sustainability

---

- What do you do during a normal class?

This class will only meet during a pre-determined bell on block days. All other days can be used as a PRT or for another scheduled class. Guest lectures from key speakers on a variety of topics will be given on block days and will be part of a YouTube channel.

- How much outside of class work will there be?

Some pre-work for each block day (often reading material) and some post-work after block day (often reflection writing). Class will NOT meet except for block days.

- How are grades determined? Mostly tests/quizzes? Homework?

Participation in guest lectures (in person or online) as well as reflection papers.



# Race, Justice, & Community

---

- What do you do during a normal class?

Relevant conversations and discussions on race, justice, media, and community. This course runs like a college seminar.

- How much outside of class work will there be?

About 1-2 hrs a week of journals or reading the news/media (tv, film, social media) for topics related to our class, some readings from our text, and a book student chooses from instructors list.

- How are grades determined? Mostly tests/quizzes? Homework?

No tests or quizzes. . . weekly media and reflection journals, assignments.



# Yearbook

---

- What do you do during a normal class?
  - During a normal class, you will be formatting your assigned yearbook pages, collecting pictures and other data needed for the yearbook.
- How much outside of class work will there be?
  - Work outside of class can include gathering pictures, formatting pages and anything that you don't finish within the allotted class time.
- How are grades determined? Mostly tests/quizzes? Homework?
  - Grades are mostly participation based along with grades for completing your assigned pages by the deadlines provided. No tests or quizzes.



# Performing Arts

---

AP Music Theory

Concert Choir

Dance as a Fine Art

Drama

Honors Electric Jazz Orchestra

Encore

Lab Band

Steel Drum/ Percussion Band

Symphony Orchestra



# AP Music Theory

---

- What do you do during a normal class?
  - Lecture and applications of the material. Sight singing and ear training practice.
- How much outside of class work will there be?
  - A manageable amount of homework almost every night. You often have time to at least start your homework in class to have questions addressed.
- How are grades determined? Mostly tests/quizzes? Homework?
  - Grades are based on homework, tests, quizzes, and in-class sight singing and ear training practice and assessments.



# Concert Choir

---

- What do you do during a normal class?
  - We SING!!! (Warm-up exercises, music reading practice, and rehearsing songs.)
    - *Did you know that singing in a choir is scientifically proven to make you happier?!*
- How much outside of class work will there be?
  - Only a few evening commitments for concerts. Generally no homework!!
- How are grades determined? Mostly tests/quizzes? Homework?
  - Class participation, performances, and learned musical knowledge.

# Dance as a Fine Art

---

- What do you do during a normal class?
  - DANCE! We practice the basics of a variety of dance forms: ballet, modern, tap, musical theater, ballroom, folk, and hip hop. We also watch and discuss great dance performances.
- How much outside of class work will there be?
  - NONE.
- How are grades determined? Mostly tests/quizzes? Homework?
  - Class participation, occasional written assignments, and quizzes.



# Encore (by Audition)

---

- What do you do during a normal class?
  - We SING!!!! Encore works on more challenging songs, which takes rehearsal every day!
- How much outside of class work will there be?
  - Occasional evening performances (a few more than Concert Choir)
  - Some outside individual practice is expected to make sure you know your songs well.
- How are grades determined? Mostly tests/quizzes? Homework?
  - Class participation, performances, learned musical knowledge.

# Honors Electric Jazz Orchestra (by Audition)

---

- EJO is an audition based, honors ensemble that explores a wide range of musical repertoire including jazz, pop, latin, contemporary, film scores, and dance. This class is for those who are committed to making great music at a high level - grades 10-12. Auditions are in March. See Dr. Grantham for details.
- Students are required to take private weekly lessons and consistently work on their craft.
- Grades are determined by class participation, and developmental progress. This ensemble is a lot of fun and showcased frequently.



# Lab Band

---

- Lab band is an Instrumental Music Course that explores a wide range of musical repertoire including jazz, pop, latin, contemporary, film scores, and dance. This class is suited for all levels of performers and focuses both on individual and ensemble development. The group is community based and inclusive.
- There are performances showcasing this awesome group each Semester.
- Grades are determined by class participation, and developmental progress. This ensemble is a lot of fun and approachable for all instrumentalists.

# Musical Theatre

---

- Musical Theatre focuses on the three main aspects – singing, dancing, and acting. On any given day, students will learn a dance combination and/or a short section of a song, work on a scene, watch videos of performances, or create their own MT songs, dances, or scenes. All abilities and confidence levels are welcome.
- The majority of learning happens within class time. Outside classwork will be limited to “as needed” rehearsing of projects/performances.
- Grades are determined by a few short quizzes and class participation, but the majority of grading is on the solo and group performances and projects.



# Steel Drum Band/Percussion

---

- Everyday is full of fun music making. Some days it is the melodious Caribbean sounds of the Steel Drums, other days we explore Fat Beat Drum Cadences played by great universities such as OSU and UC. We also contribute to the Sacred Music concert by playing percussion for the Concert Band and Symphony Orchestra.
- There are performances showcasing this awesome group each Semester.
- Grades are determined by class participation, and developmental progress. This ensemble is a lot of fun and approachable for all students.

# Symphony Orchestra

---

- Symphony Orchestra is all about community and great music making. We showcase the great diversity of the ensemble by performing Pop, Classical, Rock, plus Movie and Broadway hits. The class is structured to develop both individual skill and ensemble excellence. This group is inclusive, fun and team oriented.
- There are performances showcasing this awesome group each Semester.
- Grades are determined by class participation, and developmental progress.



# Science

---

Anatomy and Physiology

AP Biology

AP Chemistry

AP Environmental Science

Engineer Your World

Environmental Science 1 & 2

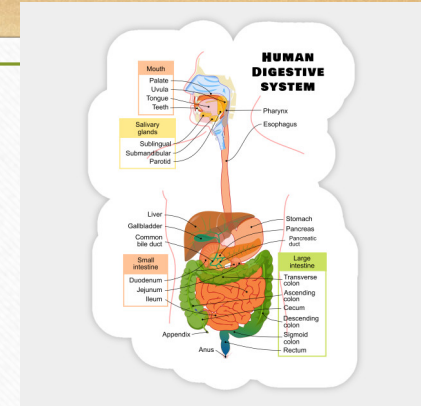
Greenhouse Studies

Organic Chemistry 1 & 2

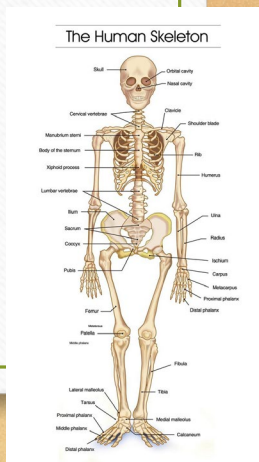


**\*\* You must be able to handle dissections, including the smell.\*\***

# Anatomy & Physiology



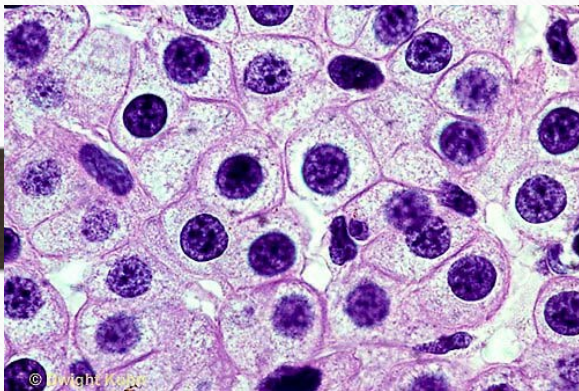
- Day to Day Class Varies: We do all sorts of activities including modeling, labs, dissections, group work, reviews, and lectures.
- Outside Work: Labeling, coloring, lab write-ups, and other homework assignments may need to be completed after class. There will be time during class to work on them and to ask questions.
- Grades: 10% Participation (Class on time, engaged, with appropriate supplies); 10% Homework; 20% Classwork/Quizzes; 30% Labs; 30% Tests/Projects
- Goal: To create a foundational knowledge of Anatomy & Physiology so that you can be successful in later Anatomy & Physiology classes!!!
- Prerequisites: Chemistry and Biology



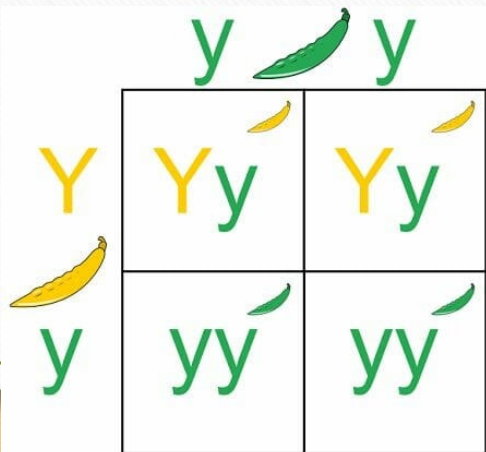




# AP Biology



AP Biology is an accelerated life science course that investigates a wide varieties of topics that include genetics, biotechnology, energy, evolution, cell communication, and ecology. This course covers the content that would be covered in a first year, college biology course. This course is great for anyone who is interested in majoring in medicine, pharmacy, veterinarian studies, nursing, genetics, environmental science, zoology, etc. ...or...has a general love of biology!



- Since this course is an advance placement course, there is an expectation that students will stay on their course readings. On average, students have homework one to two night a week. In a typical quarter, students should expect two to three of each labs, tests and quizzes.
- Your grade is determined through a combination of labs (25%), tests (45%), and in class assignments (15%) along with homework (10%) and participation (5%).



# AP Chemistry

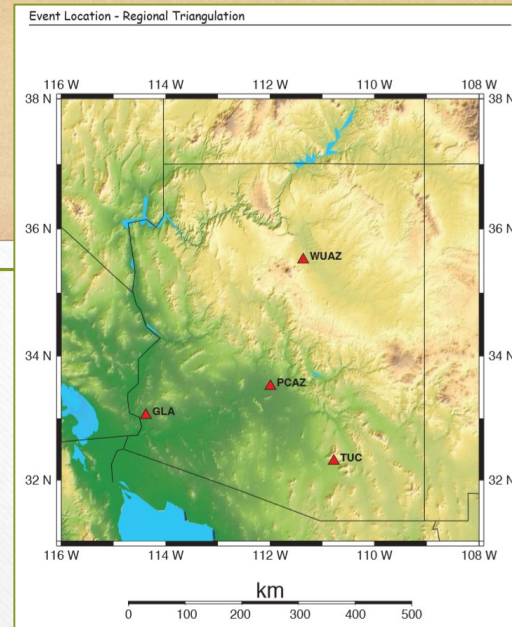
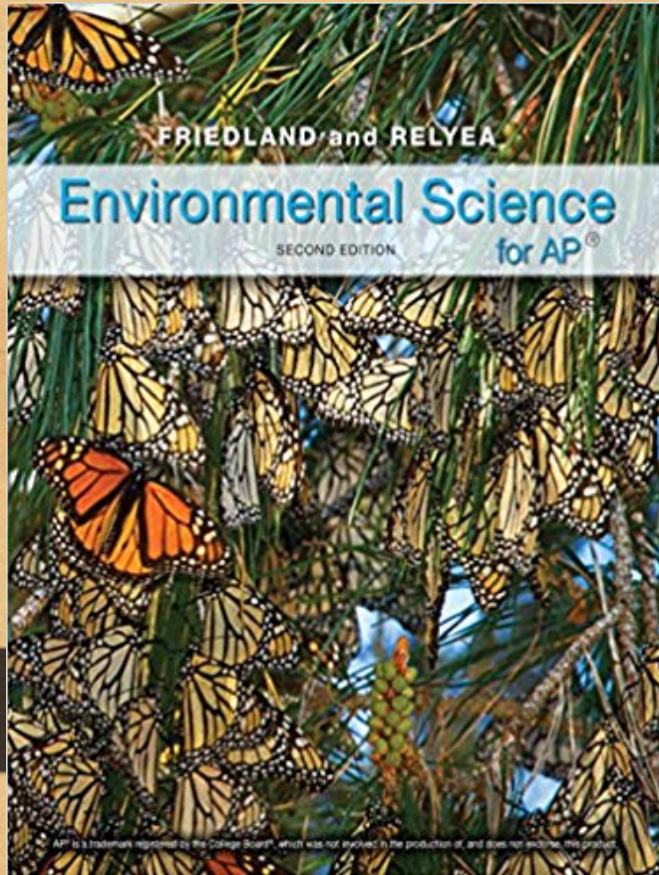
---

- What do you do during a normal class?
  - Interspersed lecture and problem solving
- How much outside of class work will there be?
  - Lab and online homework once a week plus daily studying
- How are grades determined? Mostly tests/quizzes? Homework?
  - 60% assessment, 20% homework, 20% lab

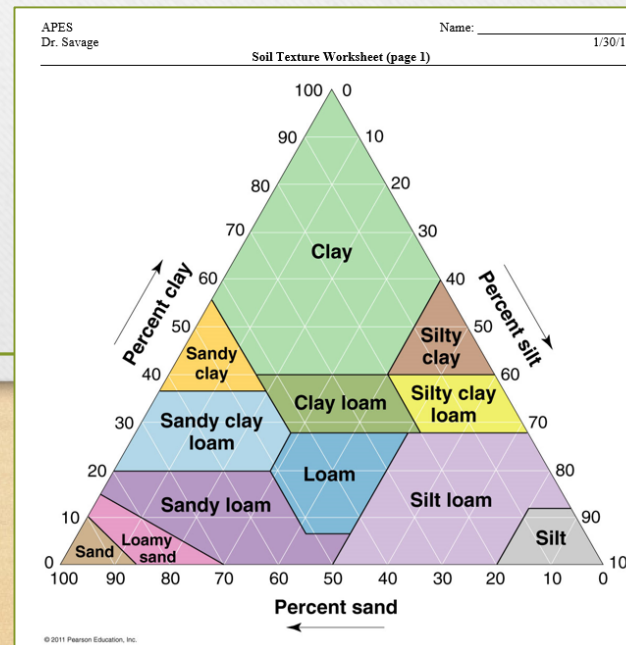
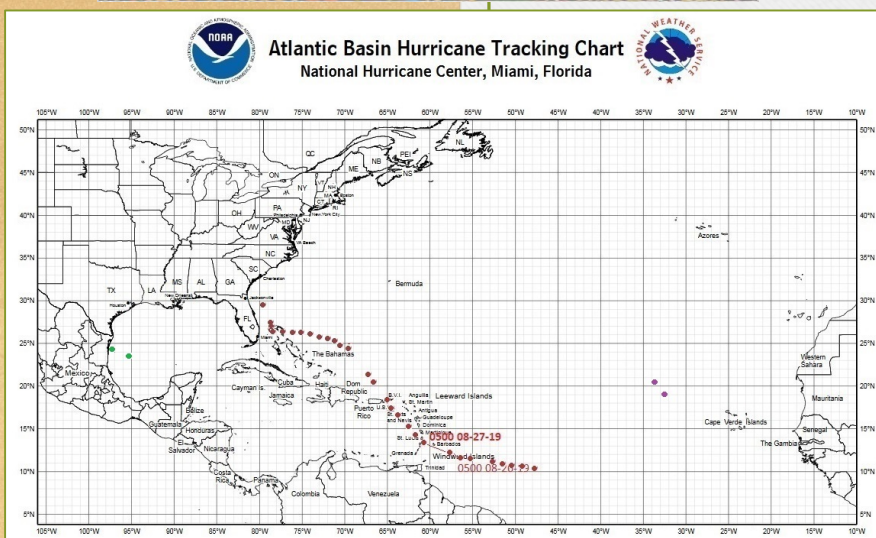


# AP Environmental Science (APES)

Dr. Savage



- **Normal Class Day:** APES is structured as a university level “survey” course that follows the curriculum outline developed by College Board. It is primarily a lecture-format class supplemented by text readings, regular homework, laboratory activities, quizzes, and tests to develop confidence in understanding and applying course content.

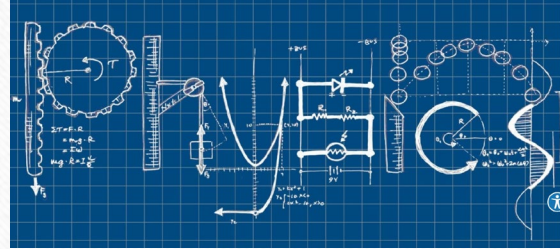


- **Work Outside of Class:** Work outside of class is typically 2-4 hours per week, and may include readings from the text, and homework exercises.
- **Grading:** Grading in APES is as follows: Tests and Quizzes (50%), Labs and Projects (25%), Homework (15%), and Participation (10%).

Class Location: CHCA Greenhouse

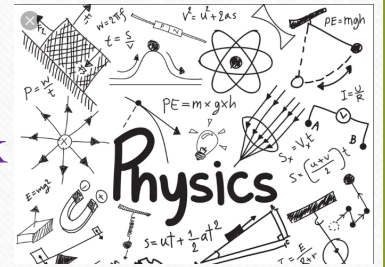


# AP



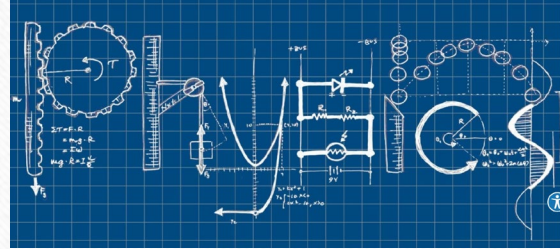
1

- This is the first year of a two year AP Physics sequence.
- This sequence is designed as an upper level alternative to Honors Physics. This course is an Algebra based physics course. Opportunities for additional study to prepare for the Calculus based AP Physics Mechanics exam is available.
- Workload: Multiple homework sets a week, independent studying and reading required. Approximately two lab reports per month.
- Grade Breakdown: 40% Tests/quizzes, 40% Lab Reports, 20% Homework

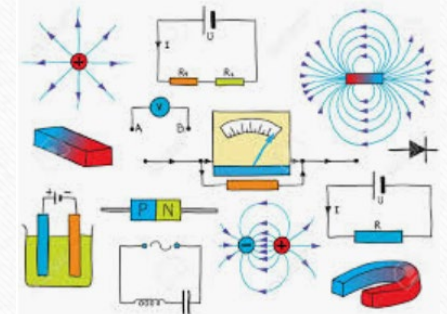




# AP PHYSICS 2



- This is the second year of a two year AP Physics sequence.
- This sequence is designed as an upper level alternative to Honors Physics. This course is an Algebra based physics course. Opportunities for additional study to prepare for the Calculus based AP Physics Electricity and Magnetism exam is available.
- Workload: Multiple homework sets a week, independent studying and reading required. Approximately two lab reports per month.
- Grade Breakdown: 40% Tests/quizzes, 40% Lab Reports, 20% Homework





# Engineer Your World

---

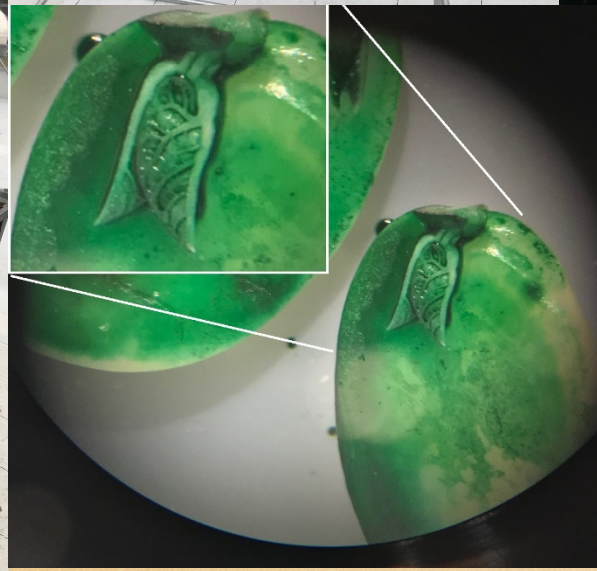
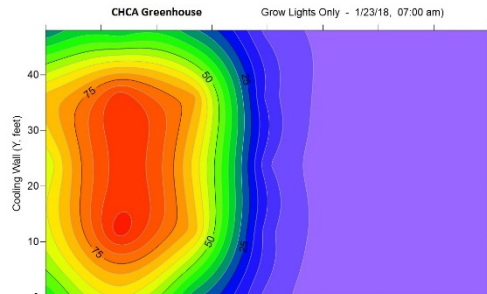
- What do you do during a normal class?
  - Lots of hands-on, project based learning. The course is centered around group projects and the Engineering Notebook.
- How much outside of class work will there be?
  - Almost none!
- How are grades determined? Mostly tests/quizzes? Homework?
  - All based on deliverables from projects, mix of group grades and individual grades. No tests, a few quizzes.



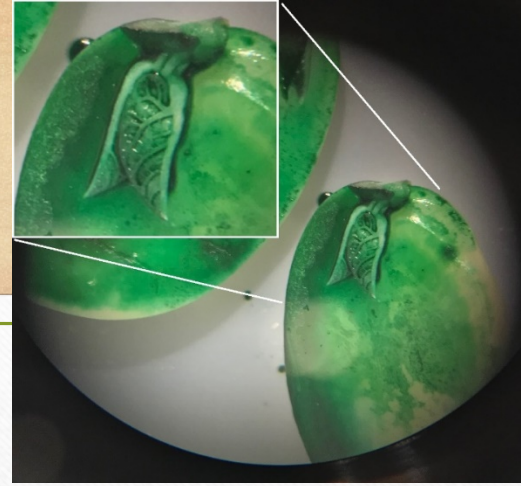
# Environmental Science I & II (Aquaponics)

Dr. Savage

- Normal Class Day: Early in the year, a typical day could include basics of biology, botany, aquaculture and chemistry to understand the design and operation of aquaponics systems. The majority of the year is “hands on” with 3-4 classes each week planting, caring for, and harvesting produce in the greenhouse.
- Work Outside of Class: Work outside of class is typically 1-2 hours per week, and includes guided reading to reinforce classroom activities.
- Grading: Grading in Environmental Science I and II is primarily based on day-to-day participation in greenhouse- and aquaponics-based activities. Grading also includes in-class activities and limited homework, and tests and quizzes (primarily the 1<sup>st</sup> quarter.







# Greenhouse Operations & Plant Biology I & II

Dr. Savage

- Normal Class Day: Early in the year, a typical day could include basics of biology, botany, and chemistry of plant nutrients to understand the operation of hydroponic and soil-based growing systems. The majority of the year is “hands on” with 3-4 classes each week planting, caring for, and harvesting produce in the greenhouse.

- Work Outside of Class: Work outside of class is typically less than 1-2 hours per week, and includes guided reading to reinforce classroom activities.
- Grading: Grading in Greenhouse Operations & Plant Biology I and II is primarily based on day-to-day participation in greenhouse activities.

Class Location: CHCA Greenhouse

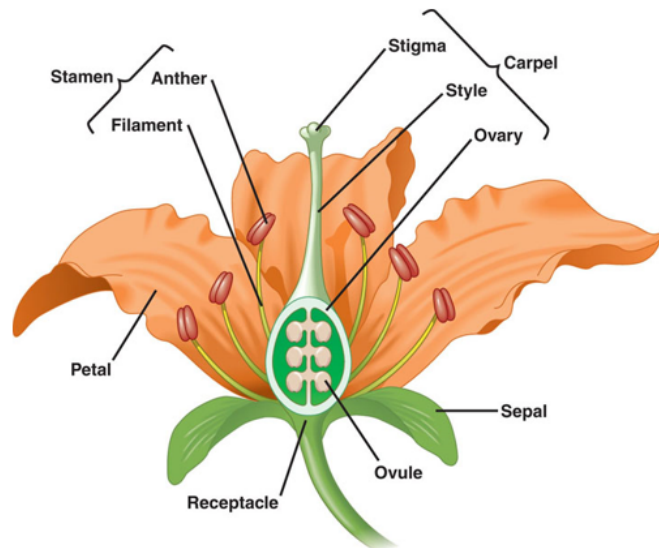
## Flower Dissection Lab Activity

(modified from Flower Dissection Lab Activity, D. Kim, Lane Tech College Prep High School, Chicago, IL)

### A: Parts of a Flower

Flower structures can be divided into two groups: the essential organs and the accessory organs. The **essential organs** are the reproductive structures, which include the **stamens** (male) and the **pistils** (female). The **accessory organs** are the **sepals** and **petals**, which surround and protect the essential organs.

**Pollination** occurs when pollen grains (male gametes) land on the sticky surface of the stigma (female flower parts) and are trapped there. The pollen grain germinates and a **pollen tube** emerges from the grain. It releases special enzymes that digest a cell the wall on the surface of the stigma. The pollen tube grows down through the style to the ovary and enters the ovule, making a continuous passageway for the two sperm nuclei to enter the ovum. **Fertilization** occurs when the sperm nuclei join the egg nuclei.





# Organic Chemistry 1 & 2

---

- What do you do during a normal class?
  - Interspersed lecture and problem solving
- How much outside of class work will there be?
  - Lab and online homework once a week plus daily studying
- How are grades determined? Mostly tests/quizzes? Homework?
  - 60% assessment, 20% homework, 20% lab



# Social Studies

---

AP European History

Current Events

Elections and Campaigns

Leadership and Strategy



# AP European History: Ewen

IMPORTANT TO NOTE! Students taking AP Euro are much more likely to be successful in future AP Social Studies courses. This class is designed to be a first step into Advanced Placement for students

---

- What do you do during a normal class?  
Discussions, document analyses, collaborative and independent work
- How much outside of class work will there be?
  - Nightly reading
- How are grades determined? Mostly tests/quizzes. Some homework.
- 25% classwork / hw, 75% assessment (tests, essays, quizzes, projects, discussions)



# Current Events

---

- What do you do during a normal class?
  - The class will be discussion-based. Students are expected to stay up on current events, collaborate on projects, and participate in class discussions.
- How much outside of class work will there be?
  - There will be very little traditional homework. Students are expected to be knowledgeable of current events and be prepared for class discussions.
- How are grades determined? Mostly tests/quizzes? Homework?
  - Grades will be determined by class participation, projects (group and individual), and a final paper.



# Elections and Campaigns: Baker

---

- This course is available to students who have completed Western Civilization and Gov./Econ
- This one semester course is designed to focus on the presidential election process of the United States. The first half of the class is devoted to the 2020 presidential election and the second half of the class will be committed to historic presidential elections.
- Students will be expected to keep current with news about the 2020 election, so there will be daily reading and research assignments from a variety of news sources.
- Students will determine their own grade as they participate in class, share in debates and present a collection of projects.



# Leadership and Strategy

---

- What do you do during a normal class?
  - Class time will vary between lecture, group discussion, video clips, podcasts, group readings and presentations.
- How much outside of class work will there be?
  - Not a heavy workload, but some homework should be expected. We will work individually and collaboratively on projects.
  - Some light outside of class reading.
- How are grades determined? Mostly tests/quizzes? Homework?
  - Grades will be determined on class participation, projects (group and individual) and a final paper.



# Visual Arts

---

AP Art

Computer Layout & Design II

Art of Repurposing

Drawing & Painting

Ceramics

Fundamentals of Art

Computer Layout & Design I

Stained Glass



# AP Art

---

- AP Art culminates in a portfolio at the end of the year that is submitted for “reading” to the AP Collegeboard. In AP Art we research techniques, artists, and styles for inspiration to produce original, expressive pieces
- Like every AP class, AP Art requires a significant amount of effort outside of class. This class is not recommended for those taking more than 2 other AP courses.
- Grades are determined by sketchbook exercises and projects. Point values are based on composition, content, craftsmanship, and creativity.



# Art of Repurposing

---

- In the Art of Repurposing we take the ordinary and make it extraordinary. Using discarded materials, we brainstorm creative ways to transform them into beautiful, meaningful works of art.
- Sketchbook work is done outside of class.
- Grades are determined by effort and completion.



# Ceramics

---

- Ceramics is a amalgamation of various clay techniques and surface decoration. In this class the student will explore the pottery wheel and hand building techniques.
- Sketchbook work is done outside of class.
- Grades are determined by effort and completion.



# Computer Layout & Design I

---

- In this Photoshop based class, the student explores the inner workings of the tools and design of the program. Projects range from real world design challenges to exploring sneaker design. This class is team taught by Mr. Cool and Mr. Hilderbrand and can count as computer or art credit.

Little to no work is expected outside of class

- Grades are determined by effort/completion and degree to which the student fulfills requirements of the rubric for the project.



# Computer Layout & Design II

---

- This is an extension of Design 1 that involves not only utilizing Photoshop techniques but also explores Adobe Illustrator.

Little to no work is expected outside of class

- Grades are determined by effort/completion and degree to which the student fulfills requirements of the rubric for the project.



# Drawing & Painting

---

Charcoal and graphite techniques in addition to traditional still life oil painting are the basis of this class. Other dry media drawing techniques will be explored.

- Sketchbook work is done outside of class.
- Grades are determined by effort and completion.



# Fundamentals of Art

---

- This class studies the elements of Art: Color, line, space, shape, form, value, and texture, through the study of art, artists, and creating art.
- Sketchbook work is done outside of class.
- Grades are determined by effort and completion.



# Stained Glass

---

- Discover the joy of Stain Glass and learn the history, techniques and design of this fine art.
- Sketchbook work is done outside of class.
- Grades are determined by completion and effort.



# World Languages

---

Greek

Latin V

Spanish Conversations I

Spanish Conversations II



# Greek

---

- What do you do during a normal class?
- How much outside of class work will there be?
- How are grades determined? Mostly tests/quizzes? Homework?



# Spanish Conversation I

---

- What do you do during a normal class? Practice Spanish in a conversational setting
- How much outside of class work will there be? Little to NONE
- How are grades determined? Mostly tests/quizzes? Homework? Participation and proficiency goals



# Spanish Conversation II

---

- What do you do during a normal class? Practice Spanish in a conversational setting
- How much outside of class work will there be? Little to NONE
- How are grades determined? Mostly tests/quizzes? Homework? Participation and proficiency goals



# Spanish-Cuentos y culturas (SPIVhonors)

---

- What do you do during a normal class? Practice Spanish using stories and other authentic resources
- How much outside of class work will there be? Little to NONE
- How are grades determined? Mostly tests/quizzes? Homework? Participation and proficiency goals



# AP Spanish Language and Culture

---

- What do you do during a normal class? Continue to increase proficiency in preparation for the AP exam
- How much outside of class work will there be? Approximately 30 minutes nightly
- How are grades determined? Mostly tests/quizzes? Homework? Written and spoken assessments similar to the AP exam for preparation